

# Owlthorpe Meadows Invertebrate Survey - 2010

Derek Whiteley

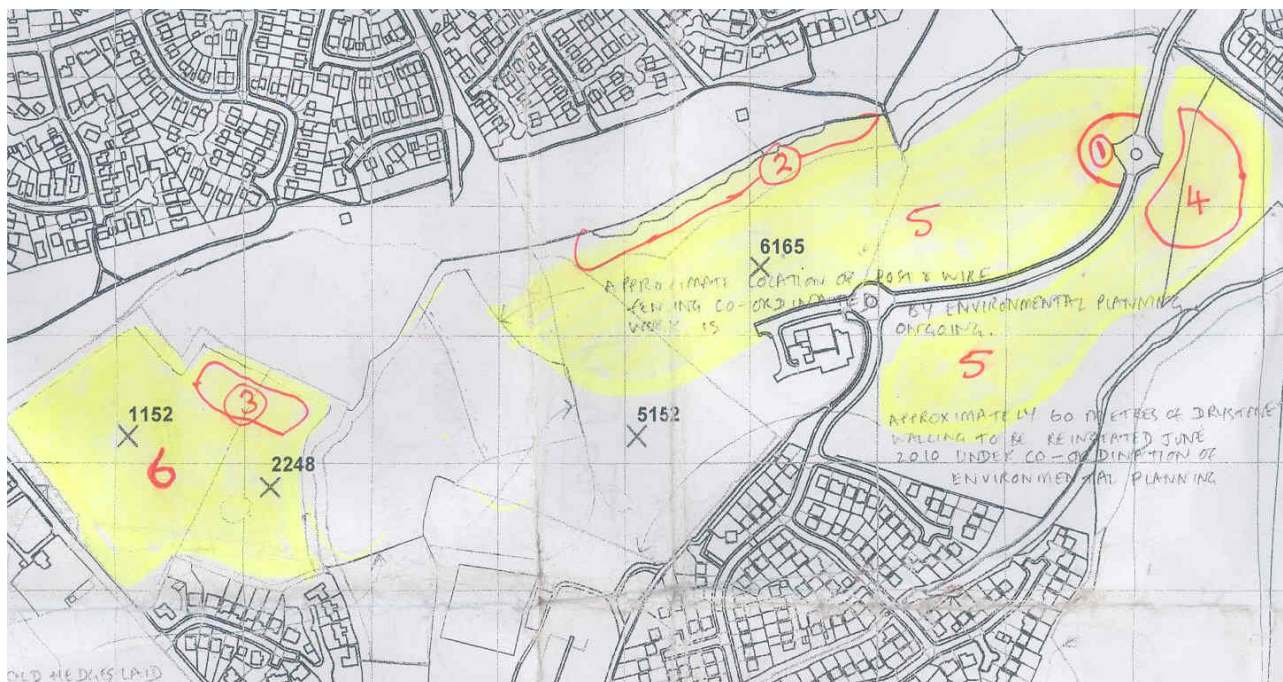
Records added to Sheffield Biological Records Centre RECORDER database.

Surveyed on 8 July 2010, 11 August 2010, and 9 September 2010, and including records from Paul Richards on 13 October 2010.

Other species will occur in April, May and June, and these will have been missed by this year's survey.

Additional specimens are still undergoing critical identification by experts and the moth list from the Sorby Moth Night should take the species list to above 170.

Areas surveyed are shown in yellow below and target notes are shown in red.



141 species have been identified so far. This list includes some species that are nationally localised and some species that are scarce in Sheffield.

## The “Potential Development Grasslands” Areas 1, 2, 4, 5 on the map

**Area 1** has a very interesting assemblage of insects. It is a curved sunny slope by the first roundabout, with ruderal or sparse vegetation and patches of bare earth. This microhabitat has an assemblage of rare and localised species for Sheffield. The snail-killing fly *Dichetophora obliterata* is actually new to Sheffield and more typical of the Derbyshire limestone dales. The Slender Groundhopper *Tetrix subulata* and the European Chinchbug *Ischnodemus sabuleti* have recently spread into Sheffield but are still quite localised. Another snail-killing fly *Coremacera marginata* is a nice find, and the darkling beetle *Lagria hirta* found by Ziggy Senkans is noteworthy for Sheffield. The hoverfly *Paragus haemorrhous* is a very localised species of bare ground and sparse vegetation.

**Area 2** is highlighted as being especially rich. There is a colony of Purple Hairstreak butterflies associated with oak trees. At least 7 were seen in late afternoon on 11 August 2010. More are likely. Ringlets, Large Skippers and Speckled Wood butterflies also favour this area. The spectacular longhorn beetle *Agapanthia villosoviridescens* was found on Hogweed in this area (conservation of Hogweed in proposed buffer strip). It breeds in large hogweed stems. The spectacular hoverfly *Didea fasciata* is another rarity in Sheffield and Nationally Notable. The attractive soldier fly *Oxycera rara* was found here. It is a semi-aquatic species probably breeding in a nearby wet flush. It is very localised in Sheffield. Brown Hawker and Migrant Hawker dragonflies feed along this sheltered edge. Results from this survey support the proposal for a wide buffer strip, to be managed as open grassland with occasional tall herb and with a transition of vegetation to the woodland edge. Eg grassland – tallherb – bramble – woodland. Margins to be scalloped to create sunny enclaves.

**Area 4** has an assemblage of interesting species including Adonis Ladybird, 22-spot Ladybird, the Thick-legged Flower Beetle *Oedemera lurida*, abundant Hairy Shieldbugs and galls of *Urophora cardui* (see below)

**Area 5.** The grassland area between the medical centre and Ochre Dyke has some interesting species. This is also a good place for Ringlets, Speckled Woods and Large Skippers. Grassland butterflies such as Meadow Brown and Gatekeeper are common in open grassy areas, and day flying Narrow-bordered Five-spot Burnet Moths are abundant in July. It was good to note the large galls on thistles produced by the attractive Picture-wing Fly *Urophora cardui*. This species has been gradually spreading from south England and these records are actually the first for Sheffield. It seems to be well established across the whole site. Conservation of thistles is important for this species and other uncommon species such as the picture wing fly *Tephritis cometa* (also a recent colonist of Sheffield)

#### Species List for Area 1,2,4,5 combined

Scientific Name	Common Name	National Status
<i>Discus rotundatus</i>	a discus snail	Common
<i>Limax maximus</i>	Great Grey Slug	Common
<i>Cepaea nemoralis</i>	Brown-lipped Snail	Common
<i>Helix aspersa</i>	Large Garden Snail	Common
<i>Nanogona polydesmoides</i>	a flat-backed millipede	Common
<i>Lithobius forficatus</i>	Common Centipede	Common
<i>Aeshna grandis</i>	Brown Hawker	Common
<i>Aeshna mixta</i>	Migrant Hawker	Local UK
<i>Sympetrum striolatum</i>	Common Darter	Common
<i>Tetrix subulata</i>	Slender Ground Hopper	Local RDB
<i>Chorthippus brunneus</i>	Common Field Grasshopper	Common
<i>Forficula auricularia</i>	Common Earwig	Common
<i>Palomena prasina</i>	Large Green Shieldbug	Common
<i>Dolycoris baccarum</i>	Hairy Shieldbug	Common
<i>Ischnodemus sabuleti</i>	European Chinchbug	Common
<i>Anthocoris nemoralis</i>	a flower bug or bloodsucking	Common
<i>Anthocoris nemorum</i>	Common Flower Bug	Common
<i>Calocoris quadripunctatus</i>	a plantbug or grassbug	Common

<i>Calocoris norvegicus</i>	a potato capsid	Common
<i>Capsus ater</i>	Common Black Plantbug	Common
<i>Leptopterna dolabrata</i>	a grassbug	Common
<i>Aphrophora alni</i>	a froghopper	Common
<i>Cicadella viridis</i>	Blue-green Leafhopper	Common
<i>Cychnus caraboides</i>	Snail Hunter	Local UK
<i>Pterostichus niger</i>	a ground beetle	Common
<i>Hippodamia variegata</i>	Adonis Ladybird	Notable/Nb
<i>Adalia bipunctata</i>	Two-spot Ladybird	Common
<i>Coccinella septempunctata</i>	Seven-spot Ladybird	Common
<i>Harmonia axyridis</i>	Harlequin Ladybird	Naturalise
<i>Calvia quattuordecimguttata</i>	Cream-spot ladybird	Common
<i>Psyllobora vigintiduopunctata</i>	22-spot Ladybird	Common
<i>Lagria hirta</i>	a darkling beetle	Nr
<i>Oedemera lurida</i>	a thick-legged flower beetle	Local UK
<i>Leptura maculata</i>	a longhorn beetle	Common
<i>Agapanthia villosoviridescens</i>	a longhorn beetle	Local UK
<i>Apion frumentarium</i>	a seed weevil	Common
<i>Sitona lineatus</i>	Pea and Bean Weevil	Common
<i>Zygaena filipendulae</i>	Six-spot Burnet	Common
<i>Zygaena lonicerae</i>	Narrow-bordered Five-spot Burnet	Common
<i>Thymelicus sylvestris</i>	Small Skipper	Common
<i>Ochlodes venata</i>	Large Skipper	Local UK
<i>Pieris brassicae</i>	Large White	Common
<i>Quercusia quercus</i>	Purple Hairstreak	Local UK
<i>Cynthia cardui</i>	Painted Lady	Migrant
<i>Aglais urticae</i>	Small Tortoiseshell	Common
<i>Inachis io</i>	Peacock	Common
<i>Pararge aegeria</i>	Speckled Wood	Common
<i>Pyronia tithonus</i>	Gatekeeper	Common
<i>Maniola jurtina</i>	Meadow Brown	Common
<i>Aphantopus hyperantus</i>	Ringlet	Common
<i>Scotopteryx chenopodiata</i>	Shaded Broad-bar	Common
<i>Tyria jacobaeae</i>	Cinnabar	Common
<i>Sciara hemeroboides</i>	Sciarid Fly	Common
<i>Beris geniculata</i>	a soldier fly	Common
<i>Beris vallata</i>	a soldier fly	Common
<i>Chorisops tibialis</i>	a soldier fly	Common
<i>Oxycera rara</i>	a soldier fly	Local UK
<i>Chloromyia formosa</i>	a soldier fly	Common
<i>Microchrysa polita</i>	a soldier fly	Common
<i>Rhagio tringarius</i>	a snipe fly	Common
<i>Leptogaster cylindrica</i>	a robber fly	Common
<i>Empis (Kritempis) livida</i>	a dance fly	Common
<i>Paragus haemorrhous</i>	a hoverfly	Local UK
<i>Didea fasciata</i>	a hoverfly	Notable/Nb
<i>Epistrophe grossulariae</i>	a hoverfly	Local UK
<i>Episyrphus balteatus</i>	a hoverfly	Common
<i>Sphaerophoria scripta</i>	a hoverfly	Common
<i>Syrphus ribesii</i>	a hoverfly	Common
<i>Syrphus torvus</i>	a hoverfly	Common
<i>Cheilosia illustrata</i>	a hoverfly	Common

<i>Eristalis arbustorum</i>	a hoverfly	Common
<i>Eristalis nemorum</i>	a hoverfly	Common
<i>Eristalis pertinax</i>	a hoverfly	Common
<i>Helophilus pendulus</i>	a hoverfly	Common
<i>Volucella pellucens</i>	a hoverfly	Common
<i>Syrirta pipiens</i>	a hoverfly	Common
<i>Conops flavipes</i>	a bee-killing fly	Common
<i>Tephritis cometa</i>	a gall fly	Local UK
<i>Tephritis formosa</i>	a gall fly	Local UK
<i>Coremacera marginata</i>	a snail-killing fly	Local UK
<i>Dichetophora obliterata</i>	a snail-killing fly	Local UK
<i>Tetanocera elata</i>	Common Slug-killing Fly	Common
<i>Tachina fera</i>	a tachinid fly	Common
<i>Strongylogaster multifasciata</i>	Bracken Sawfly	Common
<i>Pimpla hypochondriaca</i>	an ichneumon wasp	Common
<i>Amblyteles armatorius</i>	an ichneumon wasp	Common
<i>Myrmica scabrinodis</i>	a red ant	Common
<i>Lasius niger</i>	Small Black Ant	Common
<i>Vespula vulgaris</i>	Common Wasp	Common
<i>Bombus lucorum</i>	White-tailed Bumble Bee	Common
<i>Bombus lapidarius</i>	Large Red Tailed Bumble Bee	Common
<i>Bombus pratorum</i>	Early Bumble Bee	Common
<i>Bombus pascuorum</i>	Common Carder Bee	Common
<i>Apis mellifera</i>	Honey Bee	Common
<i>Trichoniscus pusillus</i>	Common Soil Woodlouse	Common
<i>Trichoniscus pygmaeus</i>	Tiny White Woodlouse	Common
<i>Oniscus asellus</i>	Common Shiny Woodlouse	Common
<i>Philoscia muscorum</i>	Long-legged Woodlouse	Common
<i>Porcellio scaber</i>	Common Rough Woodlouse	Common
<i>Nelima gothica</i>	a harvestman	Local UK
<i>Pisaura mirabilis</i>	Tent Spider	Common
<i>Araneus diadematus</i>	Garden Orb-web Spider	Common

## The “Phase 2” Meadows, Areas 3 and 6 on the above map

Surveyed on 12 August 2010 and 9 September 2010. These are only snapshots of the site on two days in late summer and many spring and midsummer species will have been missed.

**Area 3** is the most interesting part of the western fields. Vegetation is lower and more varied with patches of damp mud and wet ruts providing a suitable habitat for a good population of Slender Ground Hoppers – a local Red Data Book species. The snail killing fly *Coremacera marginata* lives here and is quite localised in Sheffield.

**Area 6** is quite rich in common insects. Good numbers of Seven-spot Ladybirds, Speckled Wood, Hairy Shieldbugs, bumblebees, soldier beetles, hoverflies, Green Shieldbugs, Blue Leaf Beetles (*Altica lythri*). The picture wing gall fly *Tephritis formosa* is noteworthy for Sheffield – and requires sowthistles (*Sonchus* species). *Urophora cardui* also occurs here as galls on Thistles and is new to Sheffield.

The site is getting overgrown by brambles, willow herbs and scrub, which will tend to limit the overall fauna to a few selected species. The area would benefit from some careful clearance and a grazing regime that allows plants to flower and seed in the summer. A

greater range of plants in flower would be useful, and some open sunny areas of grassland with grass stems of varying height. Grazing regime needs to be carefully managed to prevent poaching and allow some growth. As always, thistles, knapweeds, and a variety of low growing yellow flowers will promote a greater diversity of insects. Need to retain some Ragwort for Cinnabar moths.

### Species List for Area 3 & 6 combined

Scientific Name	Common Name	National Status
<i>Tetrix subulata</i>	Slender Ground Hopper	Local RDB
<i>Forficula auricularia</i>	Common Earwig	Common
<i>Palomena prasina</i>	Large Green Shieldbug	Common
<i>Dolycoris baccarum</i>	Hairy Shieldbug	Common
<i>Phytocoris tiliae</i>	a plantbug or grassbug	Common
<i>Stenodema laevigatum</i>	a grassbug	Common
<i>Notostira elongata</i>	a grassbug	Common
<i>Aphrophora alni</i>	a froghopper	Common
<i>Rhagonycha fulva</i>	Common red soldier beetle	Common
<i>Coccinella septempunctata</i>	Seven-spot Ladybird	Common
<i>Harmonia axyridis</i>	Harlequin Ladybird	Naturalise
<i>Calvia quattuordecimguttata</i>	Cream-spot ladybird	Common
<i>Altica lythri</i>	a leaf beetle	Common
<i>Sitona lineatus</i>	Pea and Bean Weevil	Common
<i>Pieris brassicae</i>	Large White	Common
<i>Pieris rapae</i>	Small White	Common
<i>Polyommatus icarus</i>	Common Blue	Common
<i>Pararge aegeria</i>	Speckled Wood	Common
<i>Pyronia tithonus</i>	Gatekeeper	Common
<i>Maniola jurtina</i>	Meadow Brown	Common
<i>Tyria jacobaeae</i>	Cinnabar	Common
<i>Autographa gamma</i>	Silver Y	Common
<i>Sciara hemeroboides</i>	Sciarid Fly	Common
<i>Pachygaster leachii</i>	a soldier fly	Local UK
<i>Melanostoma mellinum</i>	a hoverfly	Common
<i>Platycheirus clypeatus sens. str.</i>	a hoverfly	Common
<i>Platycheirus rosarum</i>	a hoverfly	Local UK
<i>Eupeodes latifasciatus</i>	a hoverfly	Local UK
<i>Eupeodes luniger</i>	a hoverfly	Common
<i>Scaeva pyrastris</i>	a hoverfly	Common
<i>Sphaerophoria scripta</i>	a hoverfly	Common
<i>Eristalis intricaria</i>	a hoverfly	Common
<i>Syrirta pipiens</i>	a hoverfly	Common
<i>Urophora cardui</i>	a gall fly	Common
<i>Terellia ruficauda</i>	a gall fly	Common
<i>Tephritis formosa</i>	a gall fly	Local UK
<i>Tephritis neesii</i>	a gall fly	Local UK
<i>Xyphosia miliaria</i>	a gall fly	Common
<i>Coremacera marginata</i>	a snail-killing fly	Local UK
<i>Hydromya dorsalis</i>	a snail-killing fly	Common
<i>Tetanocera elata</i>	Common Slug-killing Fly	Common
<i>Opomyza germinationis</i>	an opomyzid fly	Common
<i>Tachina fera</i>	a tachinid fly	Common

Phasia obesa	a tachinid fly	Local UK
Lasius niger	Small Black Ant	Common
Lasioglossum calceatum	Slender Mining Bee	Common
Bombus lucorum	White-tailed Bumble Bee	Common
Bombus lapidarius	Large Red Tailed Bumble Bee	Common
Bombus pascuorum	Common Carder Bee	Common
Araneus diadematus	Garden Orb-web Spider	Common

Derek Whiteley  
Assistant Ecologist  
Sheffield City Ecology Unit  
October 2010